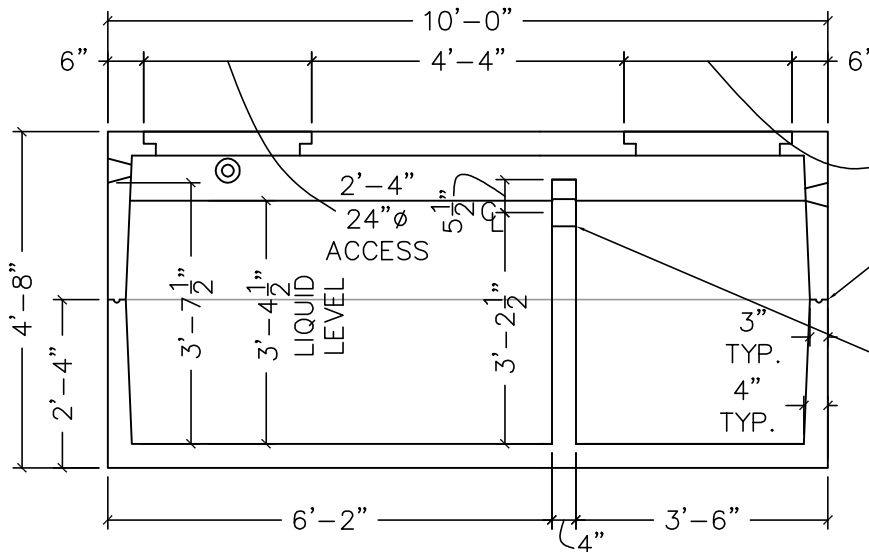


2" TO 4"Ø W/
POLYLOK SEAL
TYP. AS SHOWN

TOP VIEW
N.T.S.



2'-4"
24Ø
ACCESS

CONSEAL AT
JOINT TYP.

5"Ø KNOCKOUTS

SECTION VIEW
N.T.S.

GENERAL NOTES

- * Concrete shall conform to applicable provisions of ACI_301 and 318-11. Minimum 28 day compressive strength (f'c) - 5,000 psi
- * Cement is type V with max. C3A of 8%
- * Deformed reinforcement: ASTM A615 grade 40 & grade 60.
- * Reinforcement shall be fabricated and placed per ACI Manual of Standard Practice (ACI_315). At splices, lap bars 24" unless noted otherwise.
- * Concrete cover over reinforcing: 1" min. See also drawings.
- * Keep reinforcement clean and free of dirt, oil, scale. Oil forms prior to placing reinforcement.
- * Tank to bear on suitable stone free native bearing soil or on 6" minimum of 1 1/2" minus material over suitable native bearing soil.
- * Backfill around and over tank with compact granular (sandy) soil free of large clumps of clay and rocks over 3" in diameter. Design Ka=.32 Backfill carefully and evenly in 12" lifts. Design soil density - 110 pcf
- * Tank not designed to be placed below ground water table
- * Tank not designed for traffic loading.
- * Final grading of the surface to avoid channeling surface water towards tank.
- * Tank designed to meet MT DEQ-4, ASTM C1227-13, ASTM C890-13
- * Tank must be backfilled to top prior to watertesting.
- * Tank reinforcing as required by site location.

DRAWING TITLE:
1000 GALLON DOUBLE NON-
MONOLITHIC TANK

PROJECT:

SUPPLIER:
THREE FORKS LUMBER AND
READY MIX, INC.

ENGINEER:
WILSON ENGINEERING, PLLC

ENGINEER STAMP

