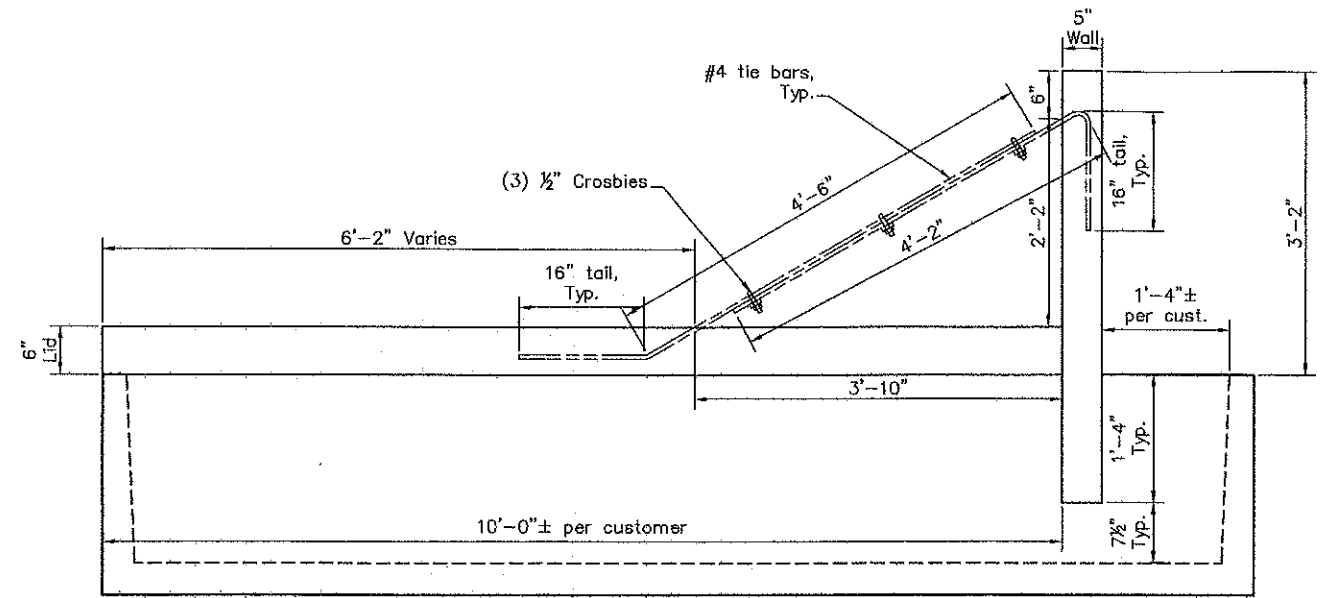
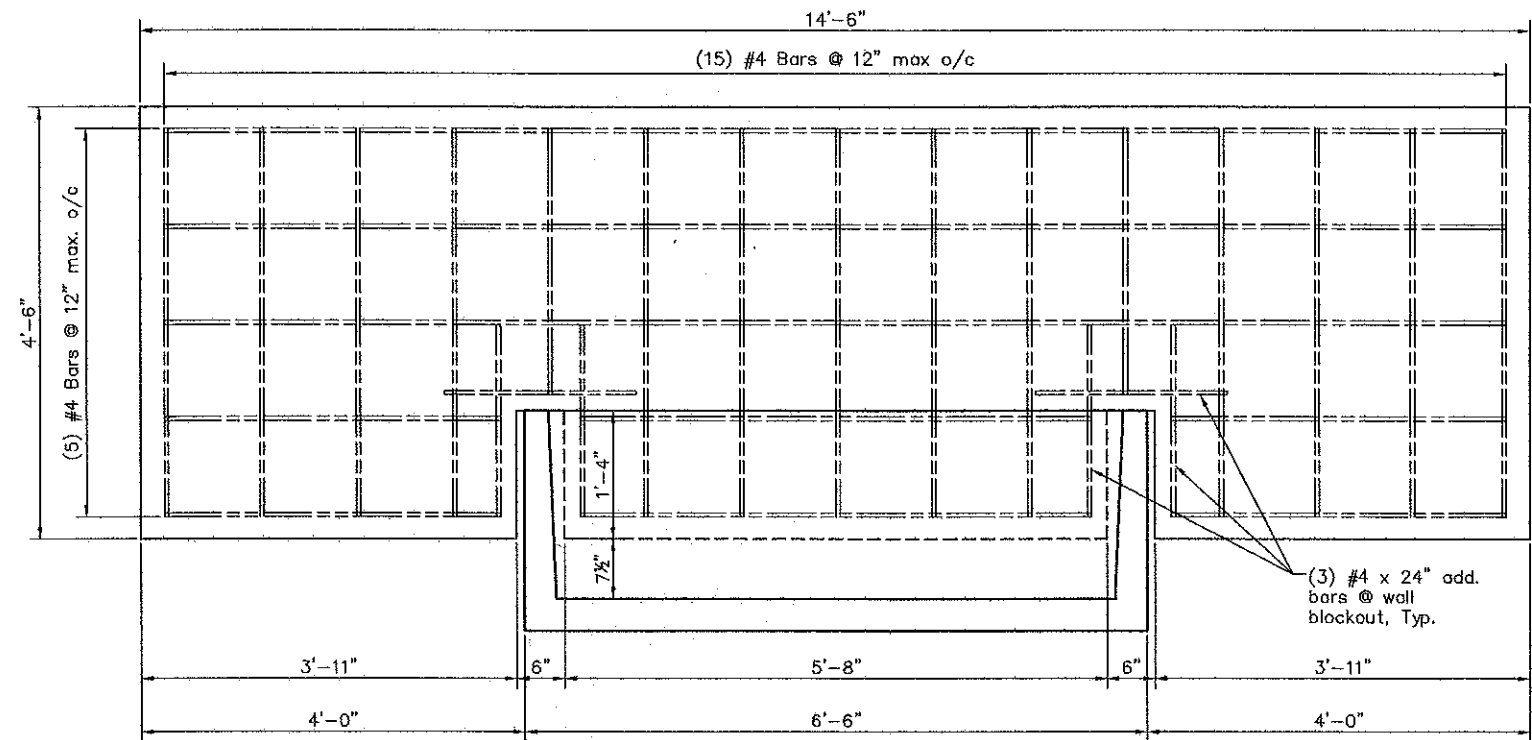


PLAN
SCALE: 1/2" = 1'-0"



SIDE ELEVATION
SCALE: 1/2" = 1'-0"



FRONT ELEVATION
SCALE: 1/2" = 1'-0"

NOTES

General:

Troughs shall be placed on a 6" thick base of 3" minus well graded level pit run type material.
The design of this tank is for fluid conditions. Precaster takes no responsibility for tanks being allowed to freeze when full of water.
Coat exposed bars and crosbies w/ corrosion resistant coating prior to burial.

Specifications:

CODE: ACI 318

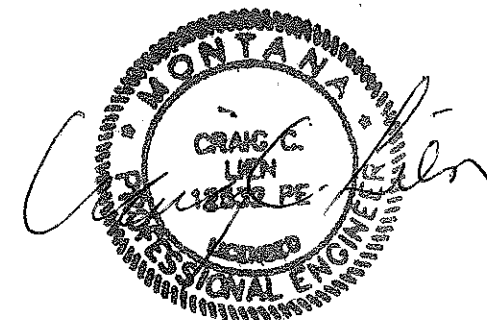
LOADS: 120 pcf soil loading, maximum fill depth of 5 ft.
40 psf equivalent lateral soil fluid pressure.

Concrete:

$f_c = 4000$ psi
Construction shall be in accordance w/ ACI 318
Concrete shall be air entrained 4% to 6%.

Reinforcing Steel:

Use ASTM A615 - Grade 40 for #3 bars. Grade 60 for #4 and larger.
Provide 2" side clearance and place mats centered in slabs.



**THREE FORKS LUMBER,
READY MIX, & PRECAST CONCRETE**

1000 GALLON BURIABLE STOCK TANK