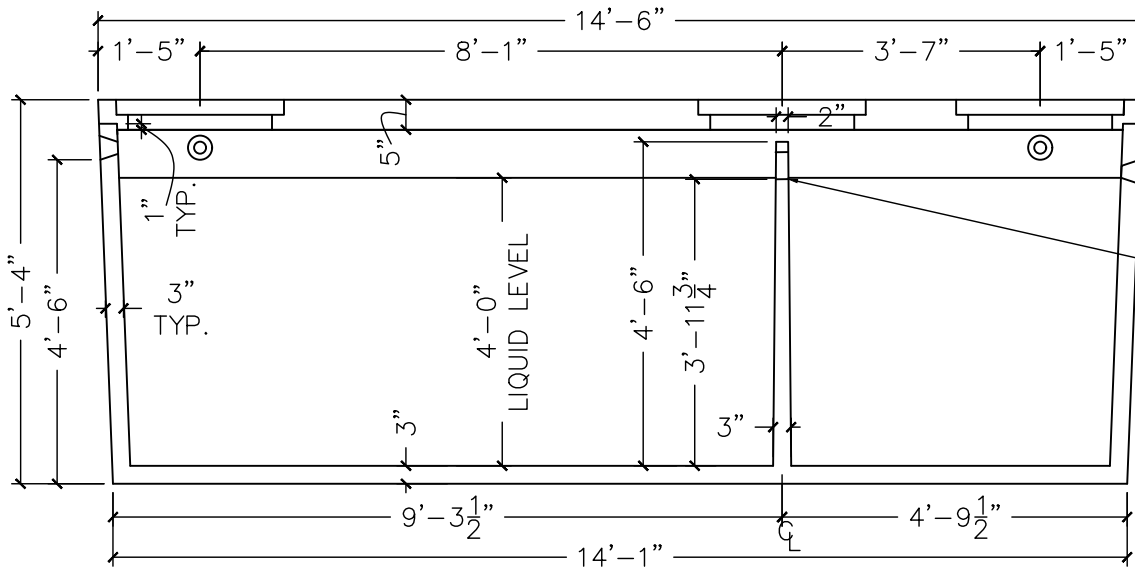


TOP VIEW
N.T.S.

2" TO 4" ϕ W/
POLYLOK SEAL
TYP. AS SHOWN



SECTION VIEW
N.T.S.

DRAWING TITLE: 1000/500 GALLON DOUBLE MONOLITHIC TANK
PROJECT:
SUPPLIER: THREE FORKS LUMBER AND READY MIX, INC.
ENGINEER: WILSON ENGINEERING, PLLC

GENERAL NOTES

- * Concrete shall conform to applicable provisions of ACI_301 and 318-11. Minimum 28 day compressive strength (f'_c) - 5,000 psi
- * Cement is type V with max. C3A of 8%
- * Deformed reinforcement: ASTM A615 grade 40 & grade 60.
- * Reinforcement shall be fabricated and placed per ACI Manual of Standard Practice (ACI_315). At splices, lap bars 24" unless noted otherwise.
- * Concrete cover over reinforcing: 1" min. See also drawings.
- * Keep reinforcement clean and free of dirt, oil, scale.
- * Oil forms prior to placing reinforcement.
- * Tank to bear on suitable stone free native bearing soil or on 6" minimum of 1 1/2" minus material over suitable native bearing soil.
- * Backfill around and over tank with compact granular (sandy) soil free of large clumps of clay and rocks over 3" in diameter. Design $K_a = .32$
- * Backfill carefully and evenly in 12" lifts. Design soil density - 110 pcf
- * Tank not designed to be placed below ground water table
- * Tank not designed for traffic loading.
- * Final grading of the surface to avoid channeling surface water towards tank.
- * Tank designed to meet MT DEQ-4, ASTM C1227-13, ASTM C890-13
- * Tank must be backfilled to top prior to watertesting.
- * Tank reinforcing as required by site location.

ENGINEER STAMP